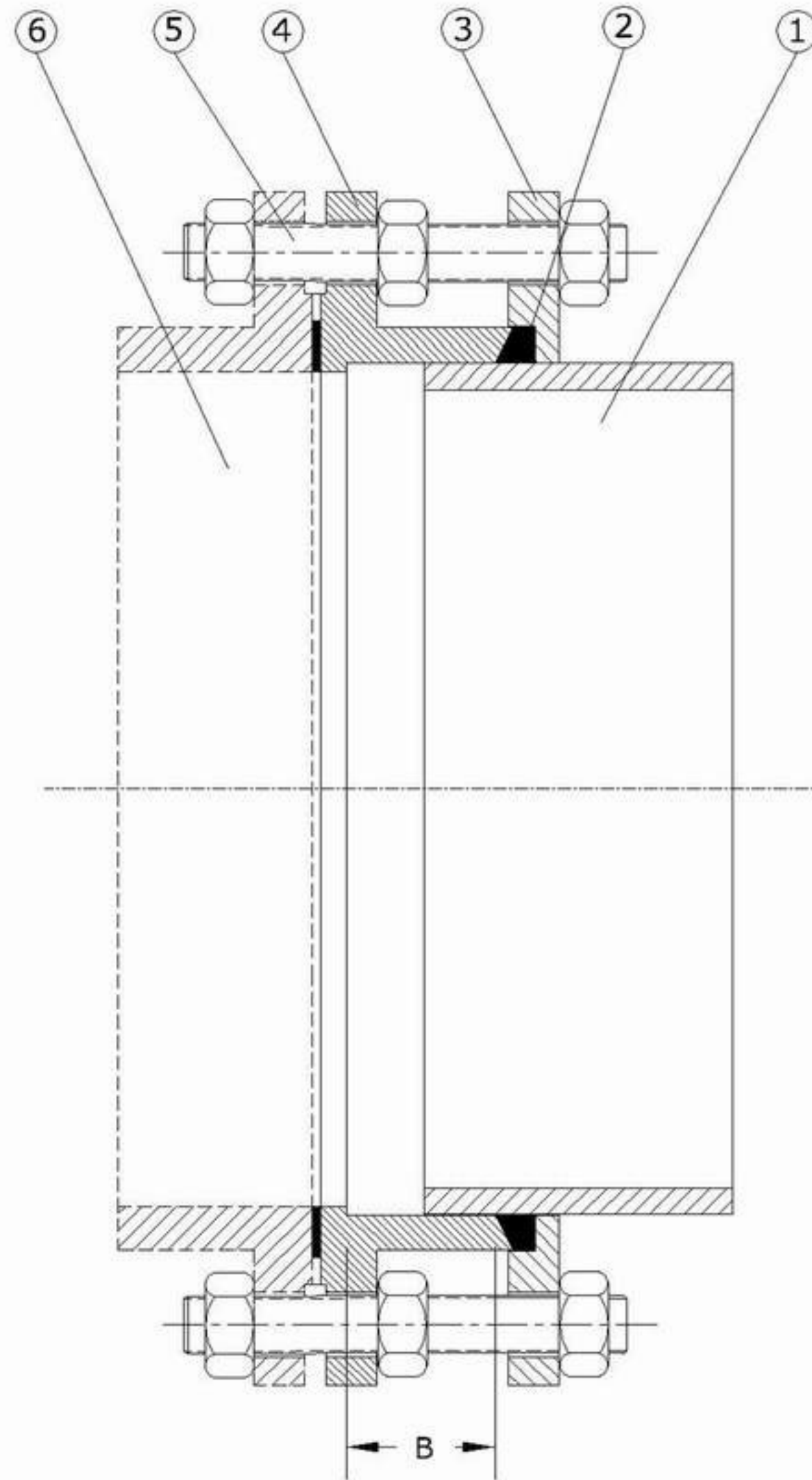


FLANGE ADAPTER

DESCRIPTION :

EIC FLANGE ADAPTERS ARE USED TO CONNECT ANY FLANGED PIECE TO ANY KIND OF SPIGOTED PIPE (UPVC , HDPE , GRP , DUCTILE IRON , GREY IRONETC.)

NOM.DIA. MM	B
80	100
100	100
150	100
200	100
250	120
300	120
350	140
400	140
500	145
600	145
700	145
800	145
900	145
1000	145



No	Description	Material	Standards
1	MAIN PIPE	OPTIONAL	
2	GASKET	EPDM - NBR Rubber	BS 2494
3	GASKET FLANGE	G.C.I GG 25/D.C.I GGG 50	ES 1300 /ISO 1083
4	FLANGE ADAPTER	G.C.I GG 25/D.C.I GGG 50	ASTM B-21
5	STUD	GALVANIZED STEEL	BS 970
6	FLANGED PIECE	OPTIONAL	

WORKING PRESSURE :10-16 BAR.

TEST PRESSURE :1.5 WORKING PRESSURE.

FLANGE CONNECTIONS ACCORDING TO ISO STANDARDS 2531