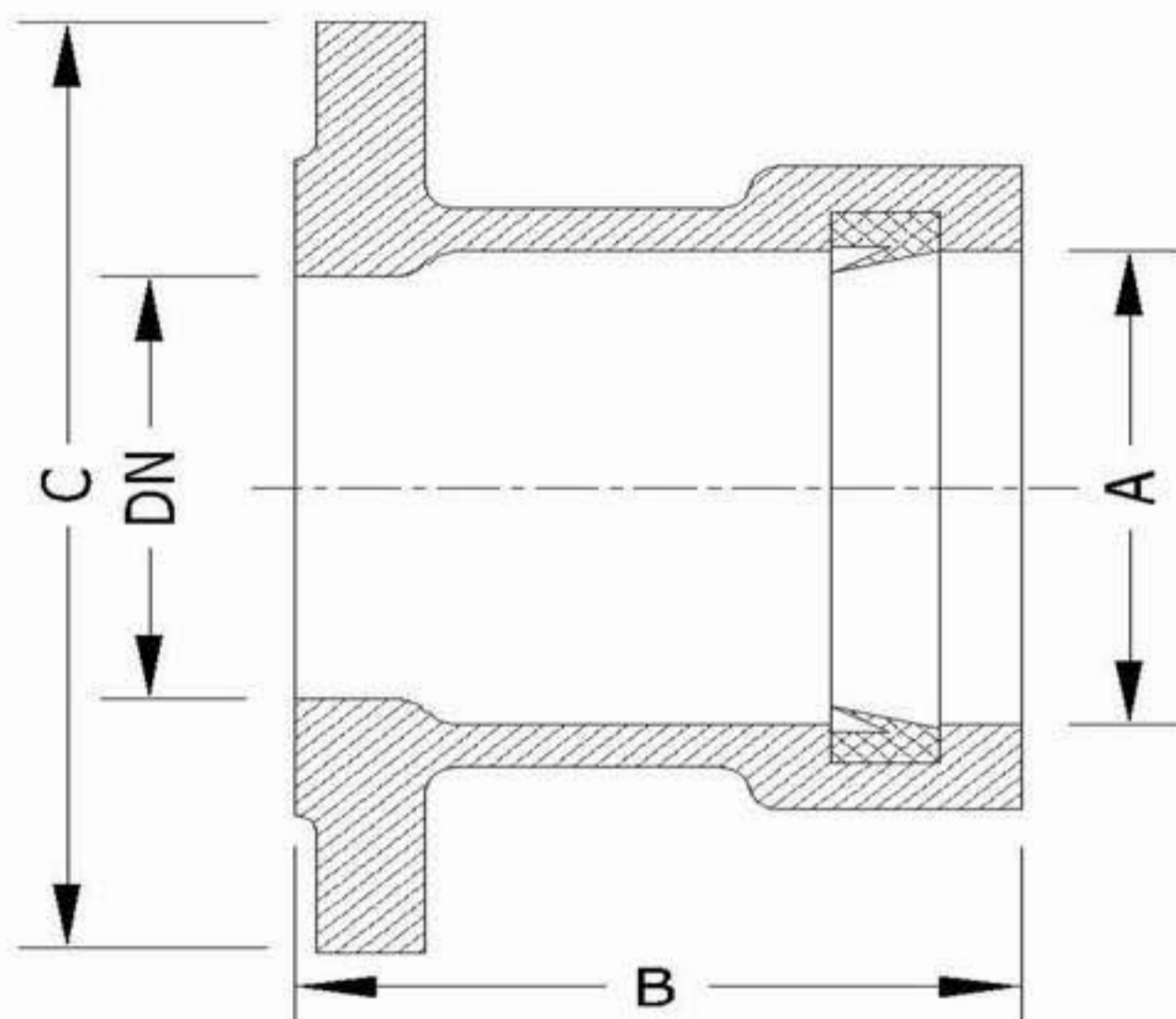


# P.V.C CONNECTORS FLANGED / SOCKET



<b>DN</b>	<b>A</b>	<b>B</b>	<b>C</b>
<b>100</b>	110	140	220
<b>150</b>	160	140	285
<b>200</b>	200	160	340
<b>200</b>	225	160	340
<b>250</b>	250	160	395
<b>300</b>	315	180	445
<b>400</b>	400	240	565
<b>500</b>	500	240	670
<b>600</b>	360	240	780

ALL DIM IN MM

**BIGER SIZES CAN BE PRODUCED.**

**GASKETS MATERIAL :NR - EPDM OR NBR ACCORING APPLICATION BS 2494**

**MATERIAL : GG25 - GGG50 - ACCORDING TO ISO 185 - ISO 1083**

**WORKING PRESSURE :10-16 BAR.**

**TEST PRESSURE :1.5 WORKING PRESSURE.**

**MATERIAL : GG25 - GGG50 - ACCORDING TO ISO 185 - ISO 1083**

**FLANGE CONNECTIONS ACCORDING TO ISO STANDARDS 2531**