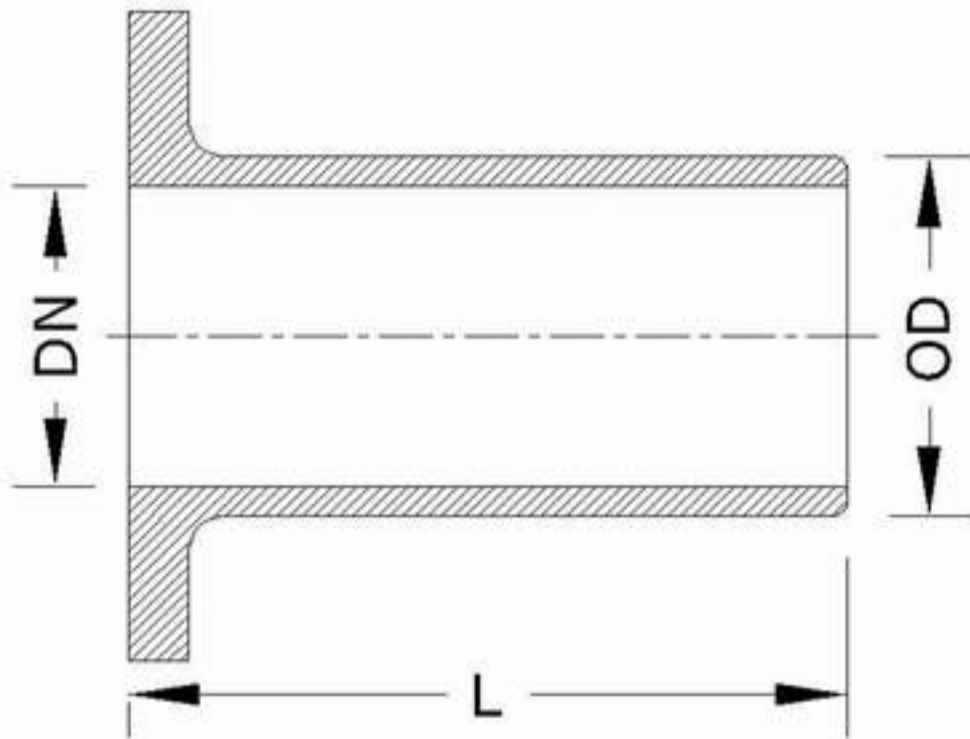


FLANGED SPIGOT PIECE



DN	OD	L	APPROX. WEIGHT PN 10	APPROX WEIGHT PN 16
100	118	360	9.6	9.6
125	144	370	12.4	12.4
150	170	380	15.6	15.6
200	222	400	22.5	22.5
250	274	420	32	31.5
300	326	440	43	42.5
350	378	460	52	55
400	429	480	64	70
500	532	520	94	109
600	635	560	133	159
700	738	600	179	194
800	842	600	226	245
900	945	600	272	295
1000	1048	600	328	369
1200	1255	600	456	520

ALL DIM IN MM

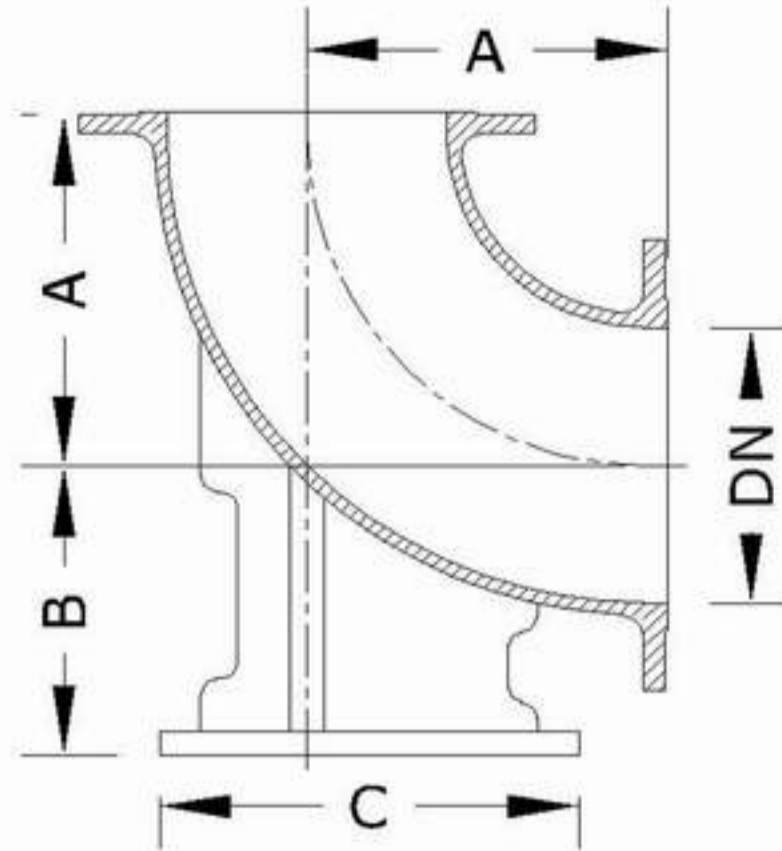
MATERIAL : GG25 - GGG50 - ACCORDING TO ISO 185 - ISO 1083

WORKING PRESSURE :10-16 BAR.

TEST PRESSURE :1.5 WORKING PRESSURE.

FLANGE CONNECTIONS ACCORDING TO ISO STANDARDS 2531

FOOT BEND ELBOW



DN	A	B	C	APPROX. WEIGHT PN 10	APPROX WEIGHT PN 16
100	180	125	200	17.3	17.8
125	200	140	225	23.5	23.5
150	220	160	250	30	30
200	250	190	300	46.5	46
250	350	225	350	75	75
300	400	255	400	106	105
350	450	290	450	139	145
400	500	320	500	178	189
500	600	385	600	283	313
600	700	450	700	428	481

ALL DIM IN MM



GATE VALVE RISING STEM



GATE VALVE NON RISING STEM



AIR VALVE



NON RETURN VALVE



SAFETY VALVE



VERTICAL FIRE HYDRANT

ENGINEERING INDUSTRIES

For Casting & Machining of Metals