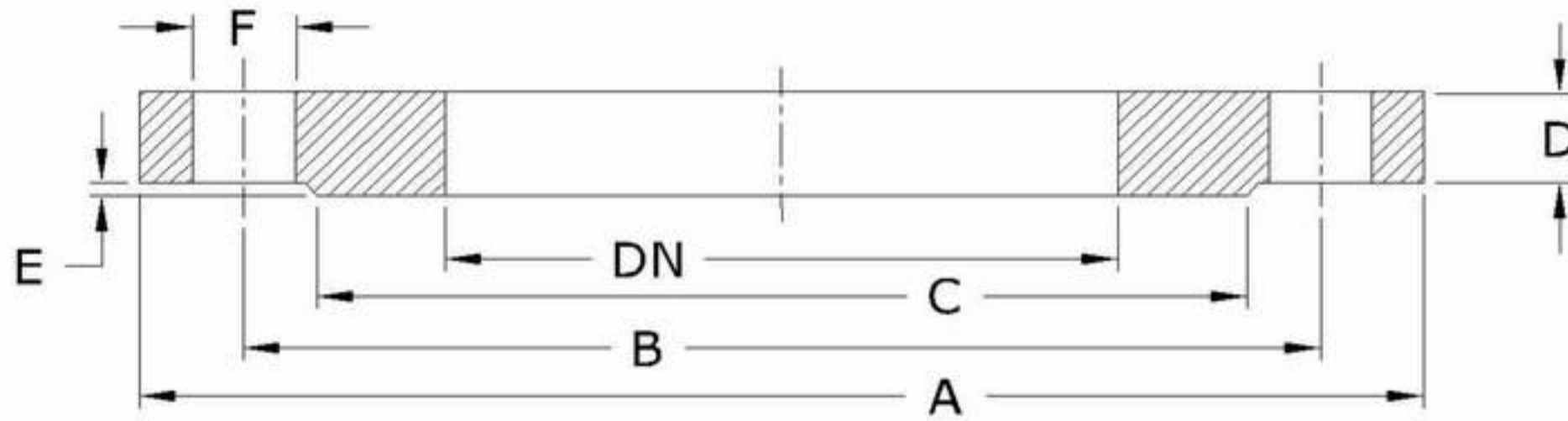


CAST FLANGES

WORKING PRESSRE 6 BARS



DN	A	B	C	D	E	F	N
25	100	75	60	12	2	12	4
32	120	90	70	14	2	14	4
40	130	100	80	13	3	14	4
50	140	110	90	13	3	14	4
65	160	130	110	13	3	14	4
80	190	150	128	15	3	18	4
100	210	170	148	15	3	18	4
125	240	200	178	17	3	18	8
150	265	225	202	17	3	18	8
200	320	280	258	19	3	18	8
250	375	335	312	21	3	18	12
300	440	395	365	20	4	23	12
350	490	445	415	22	4	23	12
400	540	495	465	24	4	23	16
500	645	600	570	26	4	23	20
600	755	705	670	25	5	27	20
700	860	810	775	27	5	27	24
800	975	920	880	29	5	30	24
900	1075	1020	980	31	5	30	24
1000	1175	1120	1080	31	5	30	28
1200	1405	1340	1295	35	5	33	32

N= NUMBER OF HOLES

ALL DIM IN MM

MATERIAL : GREY CAST IRON ACCORDING TO ES. 1



GATE VALVE
RISING STEM



GATE VALVE
NON RISING STEM



AIR VALVE



NON RETURN
VALVE



SAFETY VALVE



VERTICAL
FIRE HYDRANT

ENGINEERING INDUSTRIES

For Casting & Machining of Metals