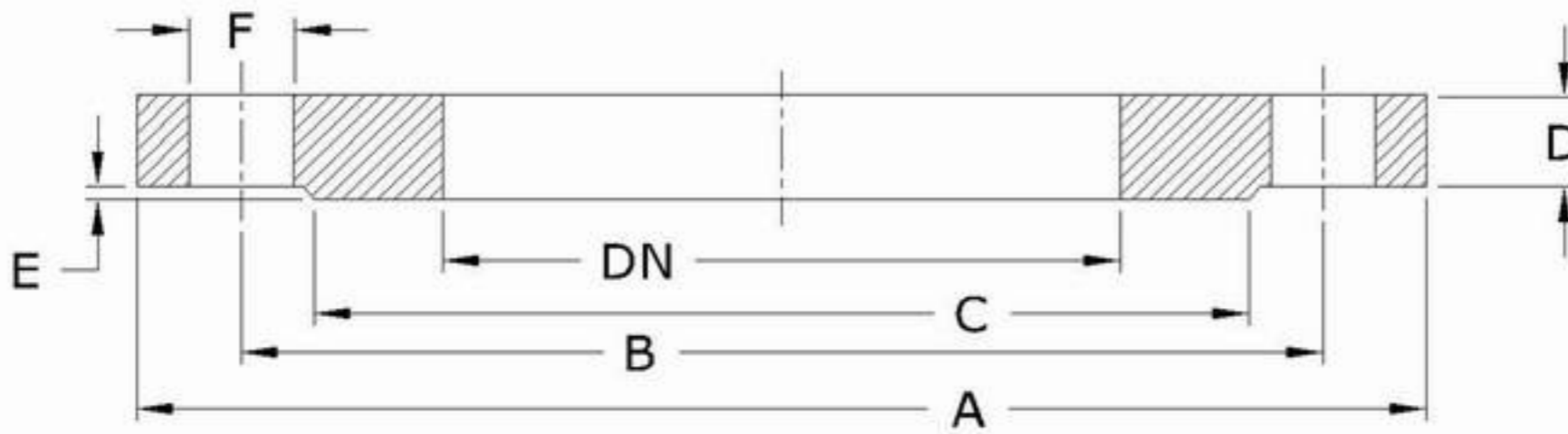


# CAST IORN FLANGES

## WORKING PRESSURE 16 BARS



**MATERIAL : GRAY CAST IRON**

DN	A	B	C	D	E	F	N
25	115	85	68	14	2	14	4
32	140	100	78	16	2	18	4
40	150	110	88	15	3	18	4
50	165	125	102	17	3	18	4
65	185	145	122	17	3	18	4
80	200	160	138	19	3	18	8
100	220	180	158	21	3	18	8
125	250	210	188	23	3	18	8
150	285	240	212	23	3	23	8
200	340	295	268	27	3	23	12
250	405	355	320	29	3	27	12
300	460	410	378	29	4	27	12
350	520	470	438	32	4	27	16
400	580	525	490	34	4	30	16
500	715	650	610	38	4	33	20
600	840	770	725	43	5	36	20
700	910	840	793	49	5	36	24
800	1025	950	900	53	5	39	24
900	1125	1050	1000	57	5	39	28
1000	1255	1170	1116	61	5	42	28
1200	1485	1390	1328	52	5	49	32

N=NUMBER OF HOLES

**MATERIAL : DUCTILE CAST IRON**

DN	A	B	C	D	E	F	N
25	115	85	68	14	2	14	4
32	140	100	78	16	2	18	4
40	150	110	84	16	3	19	4
50	165	125	99	16	3	19	4
65	185	145	118	16	3	19	4
80	200	160	132	16	3	19	8
100	220	180	156	16	3	19	8
125	250	210	184	16	3	19	8
150	285	240	211	16	3	23	8
200	340	295	266	17	3	23	12
250	400	355	319	19	3	28	12
300	455	410	370	21	4	28	12
350	520	470	429	23	4	28	16
400	580	525	480	24	4	31	16
500	715	650	609	28	4	34	20
600	840	770	720	31	5	37	20
700	910	840	794	35	5	37	24
800	1025	950	901	38	5	40	24
900	1125	1050	1001	42	5	40	28
1000	1255	1170	1112	45	5	43	28

N=NUMBER OF HOLES

MATERIAL : ACCORDING TO ES. 1300 - ES 1 - ISO 1083

ALL DIM IN MM

TABLES ACCORDING TO ISO STANDARDS 2531



GATE VALVE  
RISING STEM



GATE VALVE  
NON RISING STEM



AIR VALVE



NON RETURN  
VALVE



SAFETY VALVE



VERTICAL  
FIRE HYDRANT

# ENGINEERING INDUSTRIES

For Casting & Machining of Metals