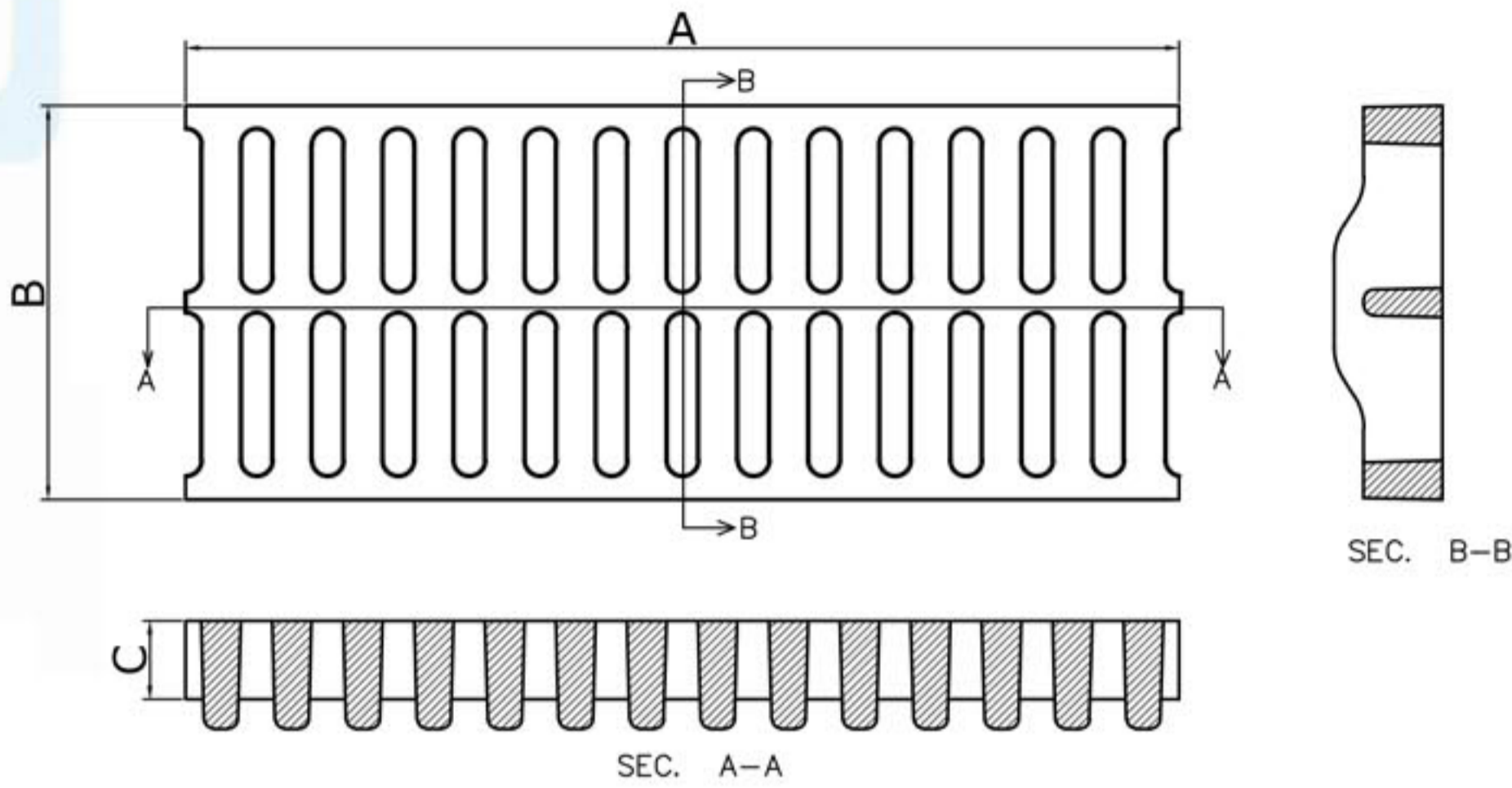


HEAVY DUTY DUCTILE CAST IRON GRATINGS

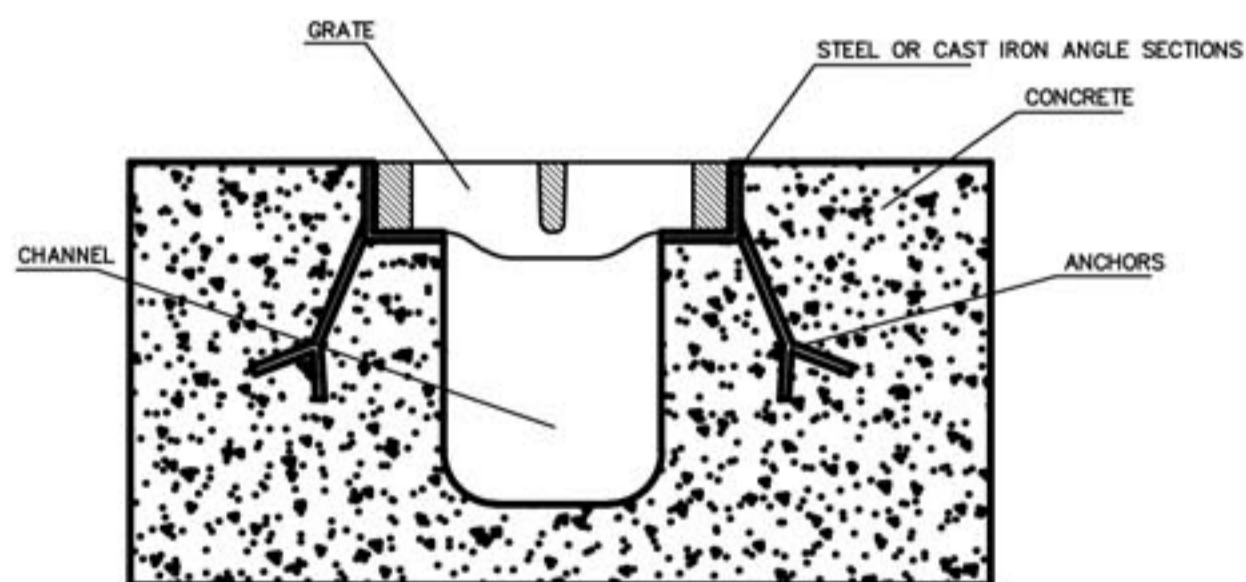


size	A	B	C
200	500	40	26
250	500	40	26
300	500	40	36
350	500	40	36
400	500	40	36

MATERIAL : DUCTILE CAST IRON

COATING : EPOXY COATED

LOAD RATING : ACCORDIND TO BS EN 124 - 2015



HEAVY DUTY GRATING ASSEMBLY

ON STEEL CHANNELS EMBEDDED IN CONCRETE WITH ANCHORS



GATE VALVE
RISING STEM



GATE VALVE
NON RISING STEM



AIR VALVE



NON RETURN
VALVE



SAFETY VALVE



VERTICAL
FIRE HYDRANT

ENGINEERING INDUSTRIES

For Casting & Machining of Metals