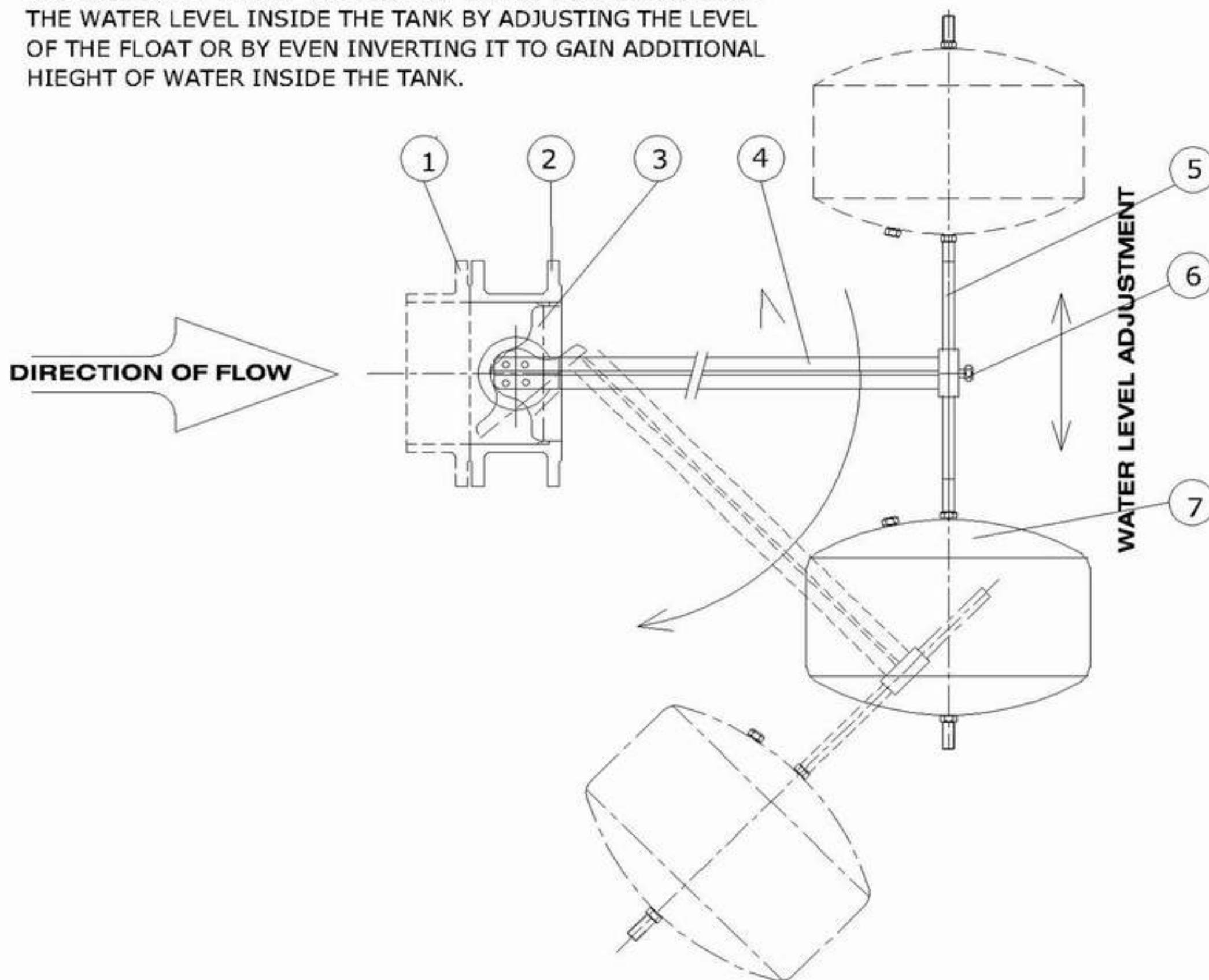


BUTTERFLY FLOAT VALVE

DESCRIPTION :

EIC BUTTER FLY FLOAT VALVES ARE USED IN TANKS WHERE THE SPACE IS LIMITED ALSO DUE TO ITS LIGHT WEIGHT WHEN COMPARED TO ANGLE FLOAT VALVES VALVES IN BIG SIZES .

EIC BUTTER FLY FLOAT VALVES HAS THE OPTION TO CONTROL THE WATER LEVEL INSIDE THE TANK BY ADJUSTING THE LEVEL OF THE FLOAT OR BY EVEN INVERTING IT TO GAIN ADDITIONAL HIEGHT OF WATER INSIDE THE TANK.



No	DESCRIPTION	MATERIAL	STANDARDS
1	Main Pipe	Optional	
2	Butterfly Valve body	G.C.I GG 25/D.C.I GGG 50	ISO 185 / ISO 1083
3	Disc	G.C.I GG 25/D.C.I GGG 50	ISO 185 / ISO 1083
4	Arm	Stainless Steel	ASTM GRADE 304
5	Float Stem	Stainless Steel	ASTM GRADE 304
6	Adjustment Bolt	Stainless Steel	ASTM GRADE 304
7	Float	Stainless Steel	ASTM GRADE 304

1-TYPE OF FLOW : AXIAL FLOW

2-RANGE OF PRODUCTION : FROM 300MM UP TO 1200 MM

3-FLOATING BALL AND ARM ARE DESIGNED PROPOTIONALLY ACCORDING TO AVAILABLE SPACE IN STORAGE TANK AND WORKING PRESSURE

FLANGE CONNECTIONS ACCORDING TO ISO STANDARDS 2531



GATE VALVE
RISING STEM



GATE VALVE
NON RISING STEM



AIR VALVE



NON RETURN
VALVE



SAFETY VALVE



VERTICAL
FIRE HYDRANT

ENGINEERING INDUSTRIES

For Casting & Machining of Metals