

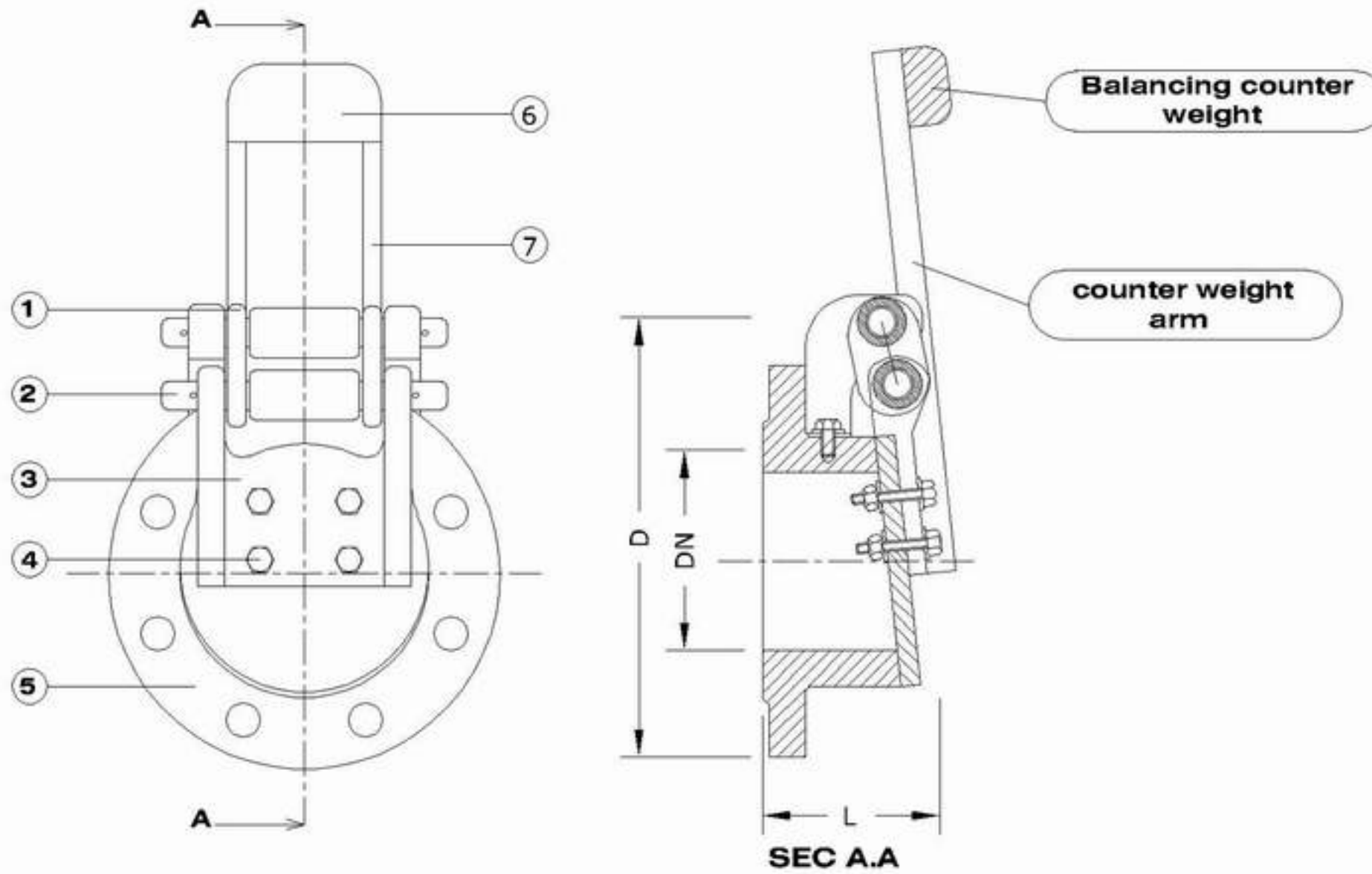
# FLAP VALVE WITH BALANCING COUNTER WEIGHT

## DESCRIPTION :

EIC FLAP VALVES ARE FITTED AT THE END OF DELIVERY LINES TO PREVENT BACK FLOW OF OF WATER OR WASTE WATER FROM STREAMS TO PUMPS AND DELIVERY LINES.

EIC FLAP VALVES CLOSING DOORS ARE FITTED WITH STAINLESS STEEL DOUBLE HINGE TO ASSURE FREE MOVEMENT AND RELIABILITY .

IN BIG SIZES OF FLAP VALVES WHERE THE WEIGHT OF THE DOOR IS TOO HEAVY WHICH MAY CAUSE RESISTANCE ON PUMPS , EIC VALVES ARE FITTED WITH BALANCING COUNTER WEIGHT TO NUTRALIZE THE WIEGHT OF THE DOOR THUS DECREASING THE WATER FLOW RESISTANCE TO THE MINIMUM



No	Description	Material	STANDARDS
1	Hinge	Stainless Steel	ASTM GRADE 304
2	Pin	Stainless Steel	ASTM GRADE 304
3	Door	G.C.I GG 25/ D.C.I GGG 50	ISO 185 / ISO 1083
4	Bolts	Stainless Steel	ASTM GRADE 304
5	Body	G.C.I GG 25/ D.C.I GGG 50	ISO 185 / ISO 1083
6	COUNTER WEIGHT ARM	STEEL	BS 970
7	COUNTER WEIGHT	G.C.I GG25	ISO 185

DN	L	D PN 10	D PN 16
600	300	780	840
700	350	895	910
800	350	1015	1025
900	400	1115	1125
1000	500	1230	1255
1200	500	1455	1485

ALL DIM IN MM

FLANGE CONNECTIONS ACCORDING TO ISO STANDARDS 2531  
SUITABLE FOR WATER WORKS AND SEWAGE SYSTEMS

THE COMPANY HAS THE RIGHT TO MAKE ANY DESIGN MODIFICATIONS WITHOUT PRIOR NOTICE



GATE VALVE  
RISING STEM



GATE VALVE  
NON RISING STEM



AIR VALVE



NON RETURN  
VALVE



SAFETY VALVE



VERTICAL  
FIRE HYDRANT

# ENGINEERING INDUSTRIES

For Casting & Machining of Metals