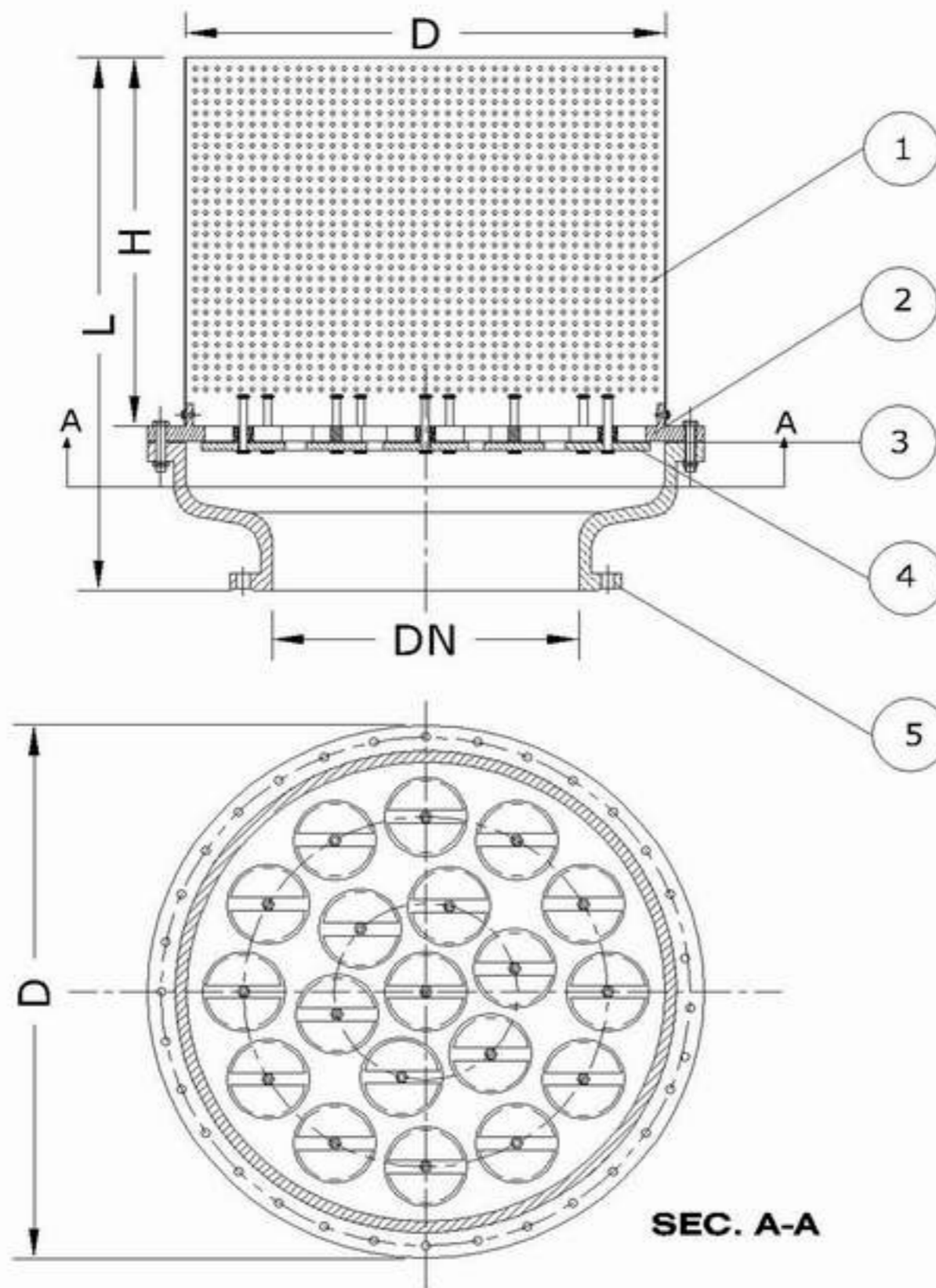


# FOOT VALVE ( MULTI DOOR )



NO	Description	Material	STANDARDS
1	Strainer	Galvanized Steel/Stainless Steel	BS 970 / ASTM GRADE 304
2	Strainer Flange	G.C.I GG 25/D.C.I GGG 50	ISO 185 / ISO 1083
3	Rubber Gasket	EPDM - NBR Reinforced Rubber	Bs 2494
4	Cover	G.C.I GG 25/D.C.I GGG 50	ISO 185 / ISO 1083
5	Body	G.C.I GG 25/D.C.I GGG 50	ISO 185 / ISO 1083

DN	L	H	D
400	600	380	500
500	800	500	600
600	1000	600	800
700	1200	800	1000
800	1450	1000	1255

ALL DIM IN MM

## DESCRIPTION :

EIC FOOT VALVES ARE FITTED ON SUCTION LINES OF PUMPS AND HAS 2 FUNCTIONS :

1- ACTS AS A FILTER TO PREVENT ANY UNDESIRABLE MATERIALS TO ENTER THE SUCTION LINES OF PUMPS AND THUS ENTERING THE PUMP BLADES .

2- ACTS AS A NON RETURN VALVE FOR THE FIRIST PRIMING OF PUMPS.

WHEN THE VALVES REACH THE SIZE OF 400 MM , THE WEIGHT OF A SINGLE DOOR BECOMES TOO HEAVY FOR A PUMP TO OPEN IT THUS LEADING TO A SIGNIFICANT DROP IN PRESSURE.

THESE SIZES OF VALVES ARE SUBSTITUTED WITH THE MULTI DOOR FOOT VALVES WHERE THE WEIGHT OF EACH DOOR BECOMES SO SMALL THAT CAUSES MINIMUM DROP IN PRESSURE.

## THE STAINER:

MADE OF GALVANIZED STEEL SHEET OR STAILLESS STEEL SHEET WHICH IS PERFORATED IN ROUND HOLES WITH TOTAL PERFERATED AREA MORE THAN DOUBLE THE INLET AREA OF THE VALVE , THUS INSURING COMPLETE MEDIA FLOW EVEN IF 50% OF THE STRAINER IS BLOCKED.

THE TOTAL AREA OF THE HOLES CAN BE INCREASED ACCORDING TO CUSTOMER REQUEST.

## APPLICATION:

SUITABLE FOR WATER WORKS AND SEWAGE SYSTEMS

FLANGE CONNECTIONS ACCORDING TO ISO STANDARDS 2531

THE COMPANY HAS THE RIGHT TO MAKE ANY DESIGN MODIFICATIONS WITHOUT PRIOR NOTICE



GATE VALVE  
RISING STEM



GATE VALVE  
NON RISING STEM



AIR VALVE



NON RETURN  
VALVE



SAFETY VALVE



VERTICAL  
FIRE HYDRANT

# ENGINEERING INDUSTRIES

For Casting & Machining of Metals