

# TILTING TYPE FOOT VALVES

## DESCRIPTION :

TILTING TYPE FOOT VALVES ARE FITTED ON SUCTION LINES OF PUMPS AND HAS 2 FUNCTIONS :

- 1- ACTS AS A FILTER TO PREVENT ANY UNDESIRABLE MATERIALS TO ENTER THE SUCTION LINES OF PUMPS AND THUS ENTERING THE PUMP BLADES .
- 2- ACTS AS A NON RETURN VALVE FOR THE FIRST PRIMING OF PUMPS. WHEN THE VALVES REACH THE SIZE OF 400 MM , THE WEIGHT OF A SINGLE DOOR BECOMES TOO HEAVY FOR A PUMP TO OPEN IT THUS LEADING TO A SIGNIFICANT DROP IN PRESSURE.

TO SOLVE THIS PROBLEM TILTING FOOT VALVES ARE USED , THEY ARE FITTED WITH A COUNTER WEIGHT TO BALANCE THE WEIGHT OF THE DOOR. THUS WITH MINIMUM SUCTION THE DOOR OF THE VALVE IS OPENED SO EASY WITH MINIMUM DROP IN PRESSURE .

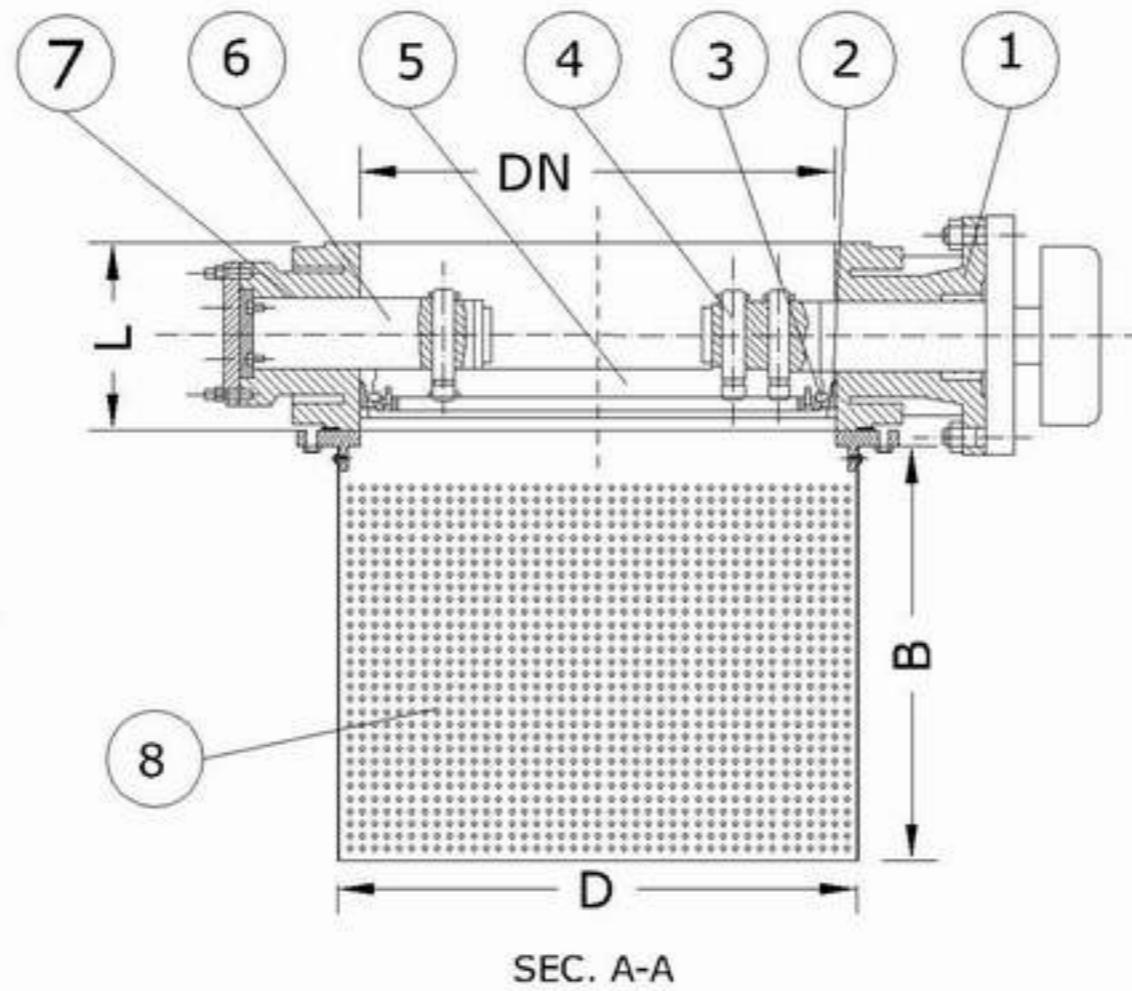
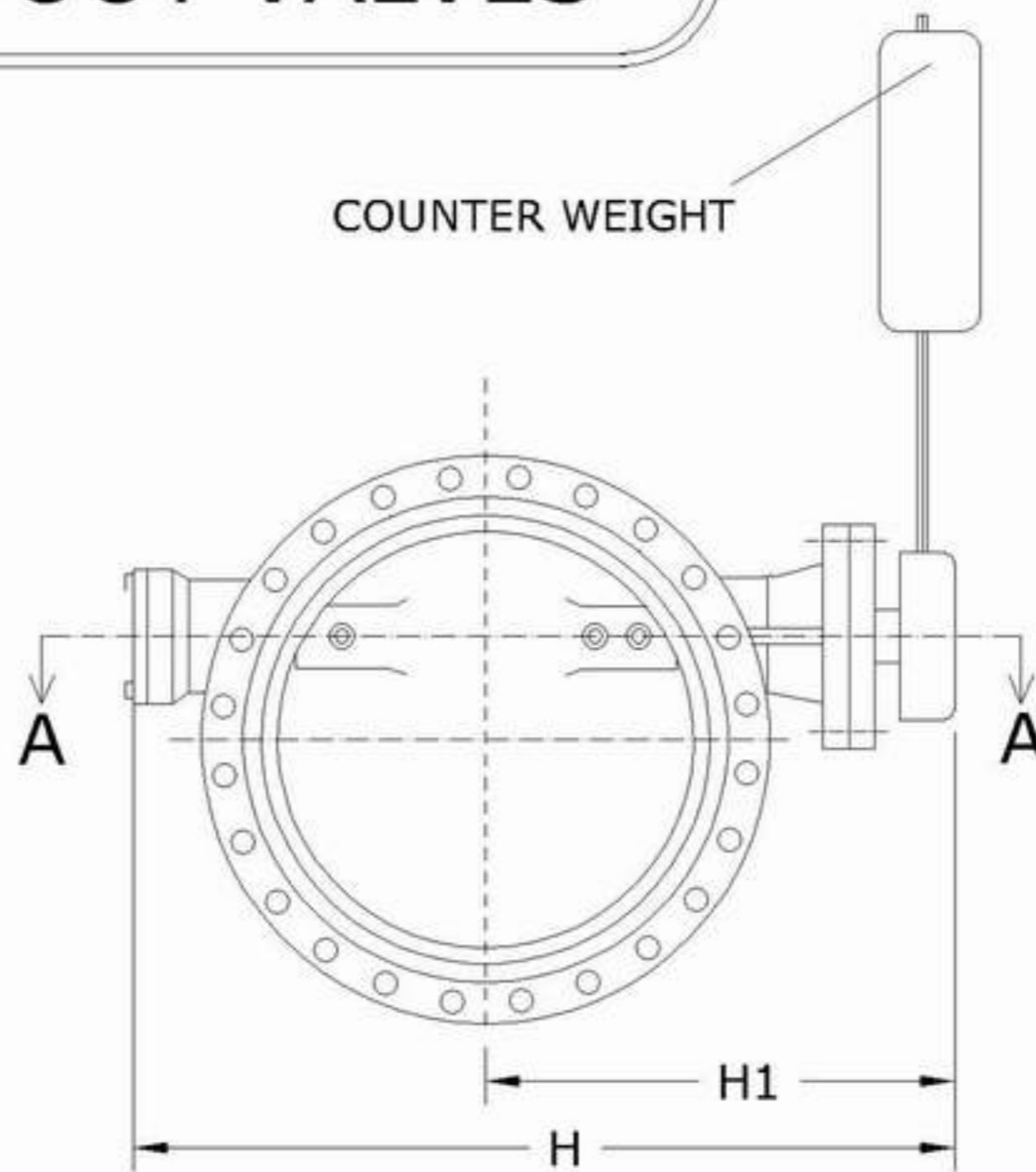
## THE STRAINER:

MADE OF GALVANIZED STEEL SHEET OR STAINLESS STEEL SHEET WHICH IS PERFORATED IN ROUND HOLES WITH TOTAL PERFORATED AREA MORE THAN DOUBLE THE INLET AREA OF THE VALVE , THUS INSURING COMPLETE MEDIA FLOW EVEN IF 50% OF THE STRAINER IS BLOCKED.

THE TOTAL AREA OF THE HOLES CAN BE INCREASED ACCORDING TO CUSTOMER REQUEST.

## APPLICATION:

SUITABLE FOR WATER WORKS AND SEWAGE SYSTEMS



NO	Description	Material	Standards	DN	L	H	H1	L	B
1	Body	D.C.I GGG 50	ISO 1083	400	216	740	460	450	400
2	SEALING RING	STAINLESS STEEL	ASTM GRADE 304	500	229	850	520	550	500
3	RUBBER GASKET	NBR-EPDM	BS 2494	600	267	950	630	680	600
4	FIXING PIN	STAINLESS STEEL	ASTM GRADE 304	700	292	1050	695	780	700
5	DISC	D.C.I GGG 50	ISO 1083	800	318	1150	750	900	800
6	SPINDLE	Stainless Steel	ASTM GRADE 304	900	330	1300	865	1000	900
7	BEARING	BRONZE	BS 1400	1000	410	1500	1005	1100	1000
8	STRAINER	STAINLESS STEEL	ASTM GRADE 304	1200	470	1850	1100	1300	1200

FLANGE CONNECTIONS ACCORDING TO ISO STANDARDS 2531

ALL DIM IN MM



GATE VALVE RISING STEM



GATE VALVE NON RISING STEM



AIR VALVE



NON RETURN VALVE



SAFETY VALVE



VERTICAL FIRE HYDRANT

# ENGINEERING INDUSTRIES

For Casting & Machining of Metals